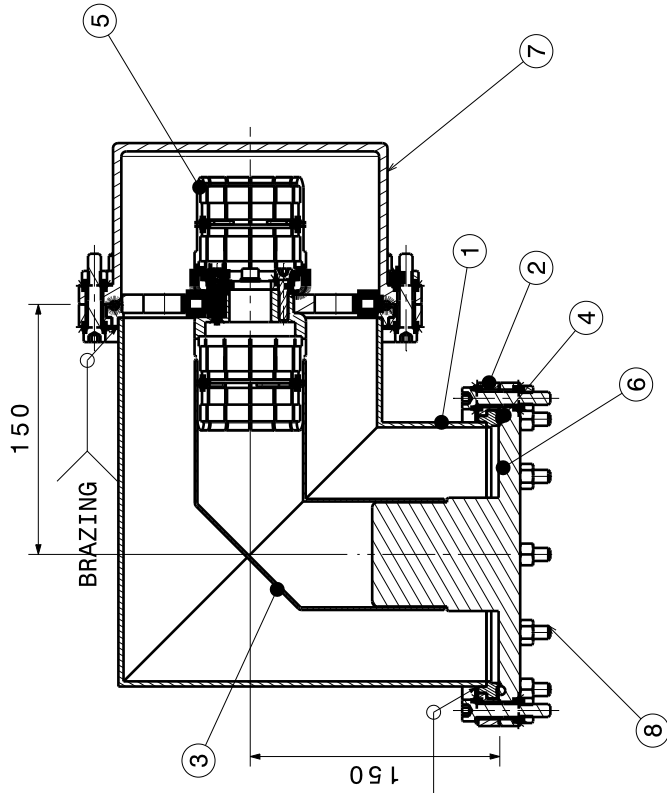
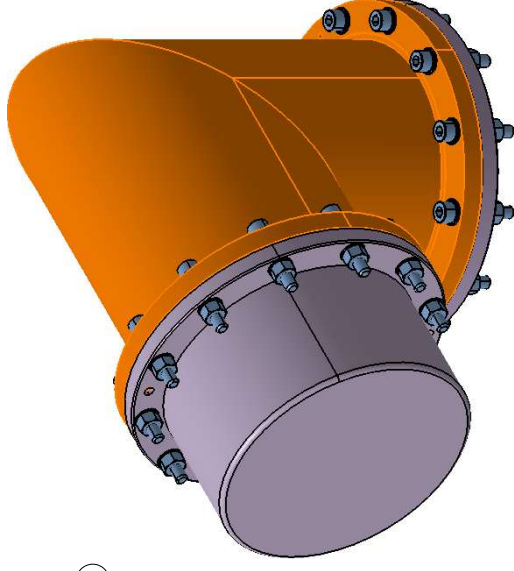


Front view
Scale: 1:3



Section view L-L
Scale: 1:3



Isometric view
Scale: 1:3

NOTE:

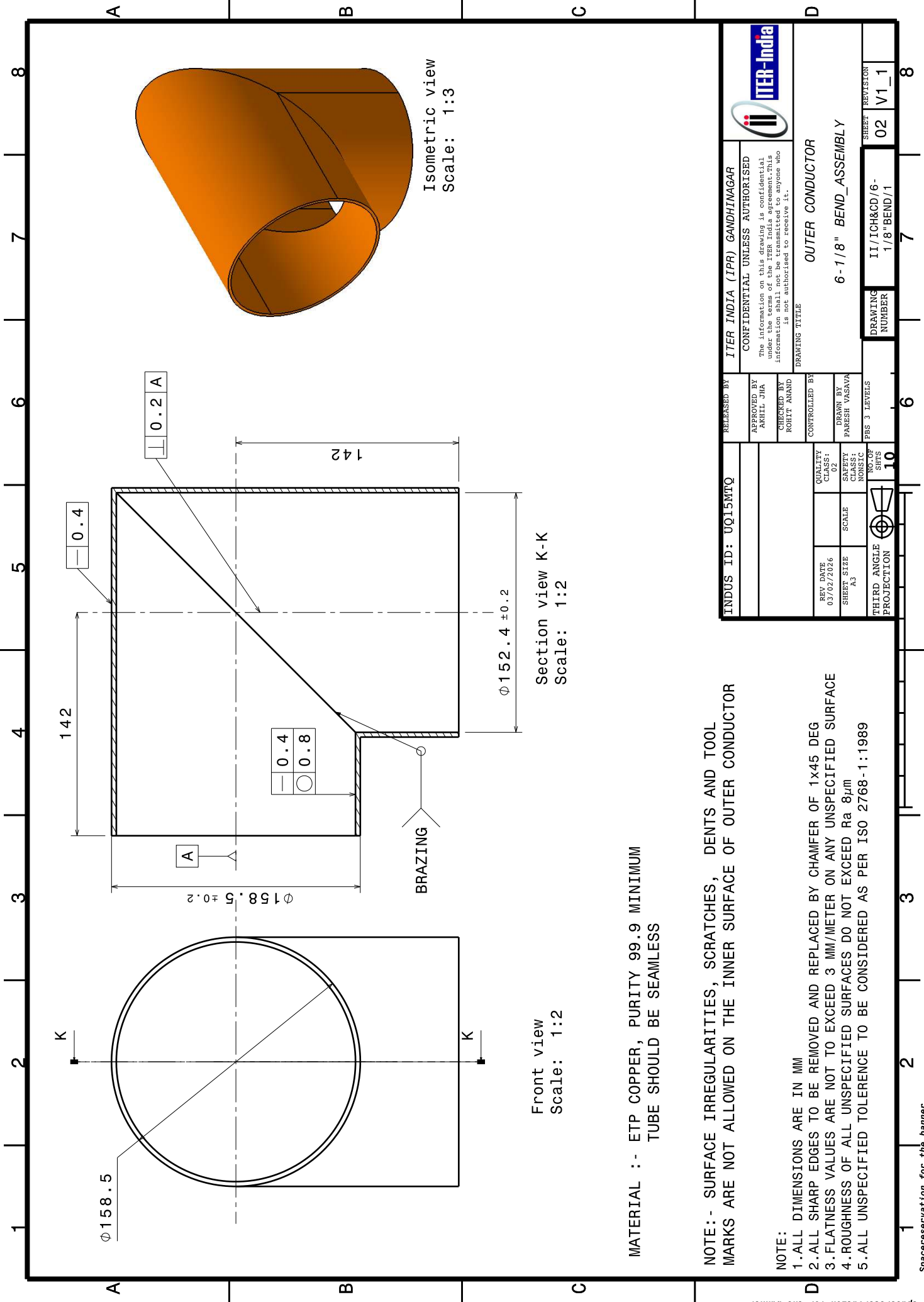
- 1.** MARKED CONSIDER AS AN IMPORTANT DIMENSIONS
- 2.ALL DIMENSIONS ARE IN MM
- 3.ALL SHARP EDGES TO BE REMOVED AND REPLACED BY CHAMFER OF 1x45 DEG
- 4.FLATNESS VALUES ARE NOT TO EXCEED 3 MM/METER ON ANY UNSPECIFIED SURFACE
- 5.ROUGHNESS OF ALL UNSPECIFIED SURFACES DO NOT EXCEED Ra 8µm
- 6.ALL UNSPECIFIED TOLERANCE TO BE CONSIDERED AS PER ISO 2768-1

8	M10X45 ALLEN BOLT WITH PLAIN, SPRING WASHER & NUT	SS304	HARDWARE	24
7	FLANGE COVER - 2	PVC	PART	01
6	FLANGE COVER - 1	PVC	PART	01
5	IC JOINT ASSEMBLY	CuZn40 & PTFE	ASSY	02
4	O-RING	RUBBER SILICON	PART	02
3	INNER CONDUCTOR	ETP COPPER	PART	1
2	SWIVEL FLANGE PART 1&2	CuZn40	ASSY	02
1	OUTER CONDUCTOR	ETP COPPER	PART	1
PART PART NAME		MATERIAL		QTY
PART NO.		TYPE		QTY

INDUS ID: UQ15MTQ	RELEASED BY ITER INDIA (IPR) GANDHINAGAR	CONFIDENTIAL UNLESS AUTHORISED The information on this drawing is confidential under the terms of the ITER India agreement. This information shall not be transmitted to anyone who is not authorised to receive it.
APPROVED BY AKHIL JHA	CHECKED BY ROHIT ANAND	CONTROLLED BY
REV DATE 03/02/2026	QUALITY CLASS: 02	SCALE 1:3
SHEET SIZE A1	SCALE 1:3	CLASS: NONSC
THIRD ANGLE PROJECTION	NO. OF SHOTS 10	PBS 3 LEVELS
DRAWING NUMBER 11/ICH&CD/6-1/8-BEND/00		SHEET REVISION 01 V1_1



6-1/8" BEND_ASSEMBLY



Spacereservation for the banner

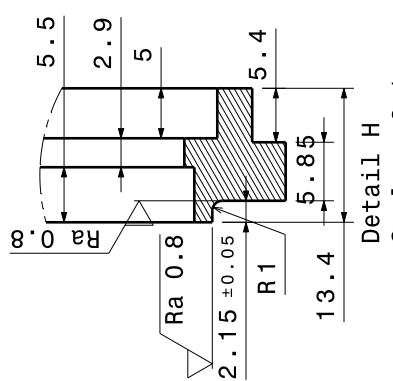
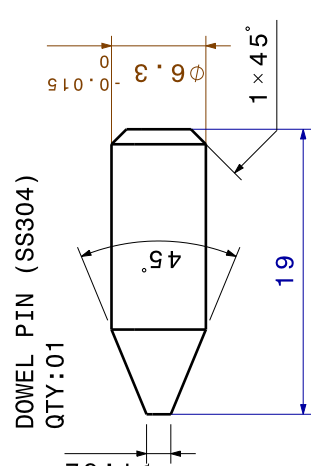
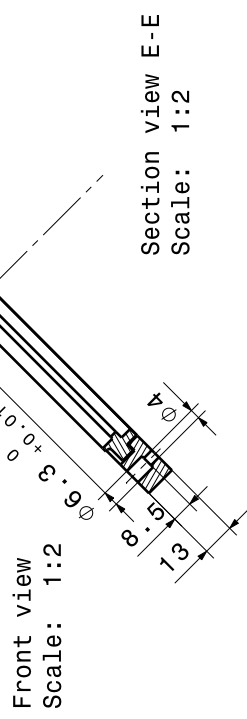
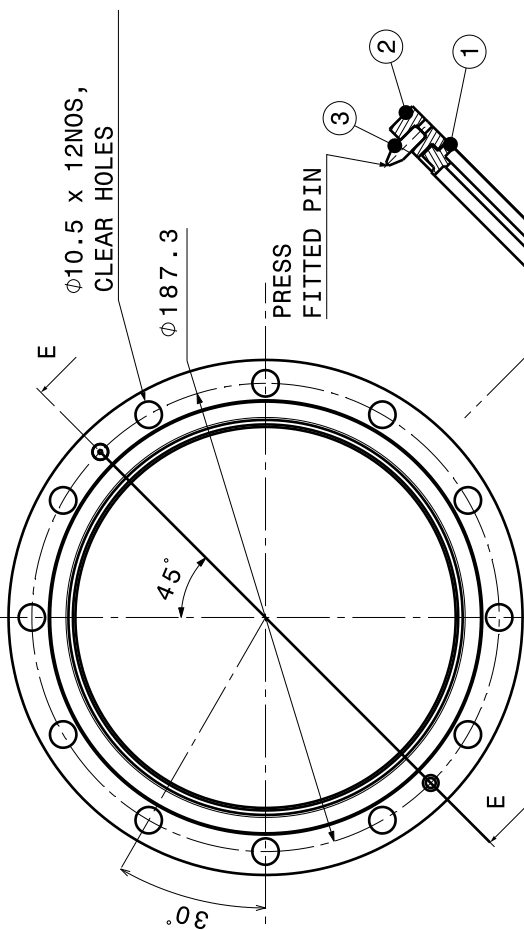
MATERIAL :- ETP COPPER, PURITY 99.9 MINIMUM
TUBE SHOULD BE SEAMLESS

NOTE:- SURFACE IRREGULARITIES, SCRATCHES, DENTS AND TOOL
MARKS ARE NOT ALLOWED ON THE INNER SURFACE OF OUTER CONDUCTOR

- NOTE:
- 1.ALL DIMENSIONS ARE IN MM
 - 2.ALL SHARP EDGES TO BE REMOVED AND REPLACED BY CHAMFER OF 1x45 DEG
 - 3.FLATNESS VALUES ARE NOT TO EXCEED 3 MM/METER ON ANY UNSPECIFIED SURFACE
 - 4.ROUGHNESS OF ALL UNSPECIFIED SURFACES DO NOT EXCEED Ra 8 μ m
 - 5.ALL UNSPECIFIED TOLERANCE TO BE CONSIDERED AS PER ISO 2768-1:1989

INDUS ID: UQ15MTQ		RELEASED BY ITER INDIA (IPR) GANDHINAGAR	
		CONFIDENTIAL UNLESS AUTHORISED The information on this drawing is confidential under the terms of the ITER India agreement.This information shall not be transmitted to anyone who is not authorised to receive it.	
		DRAWING TITLE OUTER CONDUCTOR	
		6-1/8" BEND_ASSEMBLY	
		SHEET REVISION 02 V1_1	
		DRAWING NUMBER II/ICH&CD/6-1/8"BEND/1	
		PBS 3 LEVELS	
		NO OF SHTS 10	
		THIRD ANGLE PROJECTION	
		REV DATE 03/02/2026	
		CLASS: A1	
		SHEET SIZE SCALE	
		CLASS: NONSC	
		QUALITY CLASS: A1	
		DRAWN BY PARESH VASAVA	
		CHECKED BY ROHIT ANAND	
		APPROVED BY AKHIL JHA	
		ITER-India	



Spacereservation for the banner



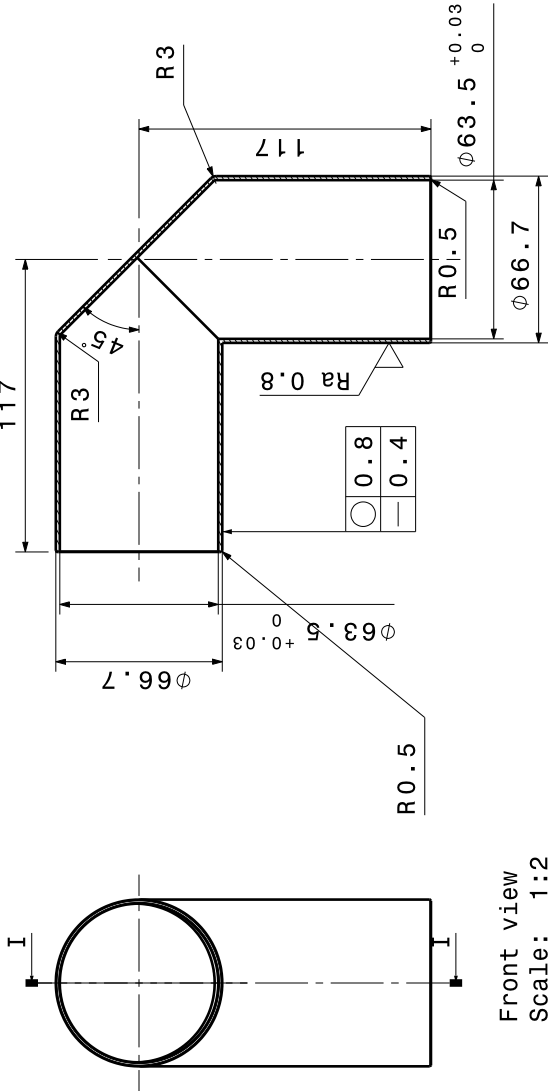
SWIVEL FLANGE PART-1
MATERIAL: CuZn40
QTY:01

SWIVEL FLANGE PART-2
MATERIAL: CuZn40
QTY:01

NOTE:
1.ALL THREADS INSERT TO BE USED
2.ALL SHARP EDGES TO BE REMOVED AND REPLACED BY CHAMFER OF 1x45 DEG
3.FLATNESS VALUES ARE NOT TO EXCEED 3 MM/METER ON ANY UNSPECIFIED SURFACE
4.ROUGHNESS OF ALL UNSPECIFIED SURFACES DO NOT EXCEED Ra 8µm
5.ALL UNSPECIFIED TOLERANCE TO BE CONSIDERED AS PER ISO 2768-1:1989

INDUS ID: UQ15MTQ		RELEASED BY ITER INDIA (IPR) GANDHINAGAR		 ITER-India	
APPROVED BY AKHIL JHA		CONFIDENTIAL UNLESS AUTHORISED			
CHECKED BY ROHIT ANAND		The information on this drawing is confidential under the terms of the ITER India agreement. This information shall not be transmitted to anyone who is not authorised to receive it.			
CONTROLLED BY		DRAWING TITLE SWIVEL FLANGE PART 1&2			
REV DATE 03/02/2026	QUALITY CLASS: Q2	6-1/8" BEND_ASSEMBLY			
SHEET SIZE A3	SCALE	DRAWN BY PARISH VASNA			
THIRD ANGLE PROJECTION	NO OF SHEETS 10	PDS 3 LEVELS		DRAWING NUMBER 03	
				SHEET REVISION V1_1	
				II/ICH&CD/6-1/8"BEND/2	

PART: INNER CONDUCTOR



Front view
Scale: 1:2

Section view I-I
Scale: 1:2

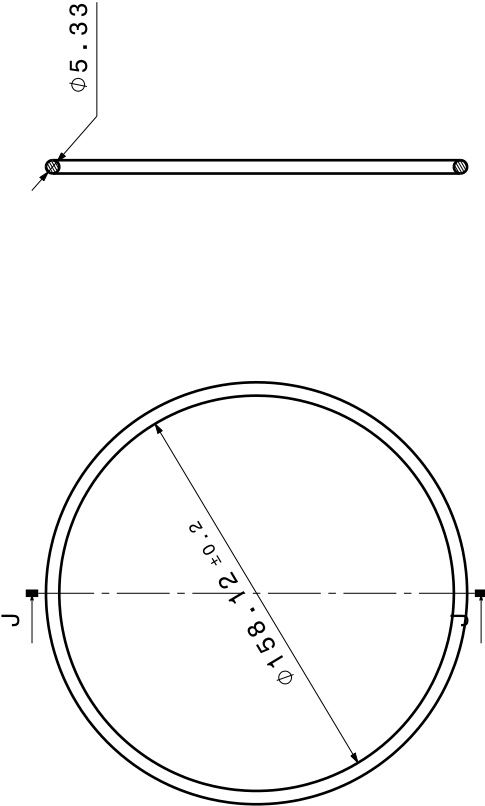
Isometric view
Scale: 1:2

MATERIAL :- ETP COPPER, PURITY 99.9 MINIMUM
TUBE SHOULD BE SEAMLESS

QTY: 01

NOTE:- SURFACE IRREGULARITIES, SCRATCHES,
DENTS AND TOOL MARKS ARE NOT ALLOWED
ON THE OUTER SURFACE OF INNER CONDUCTOR

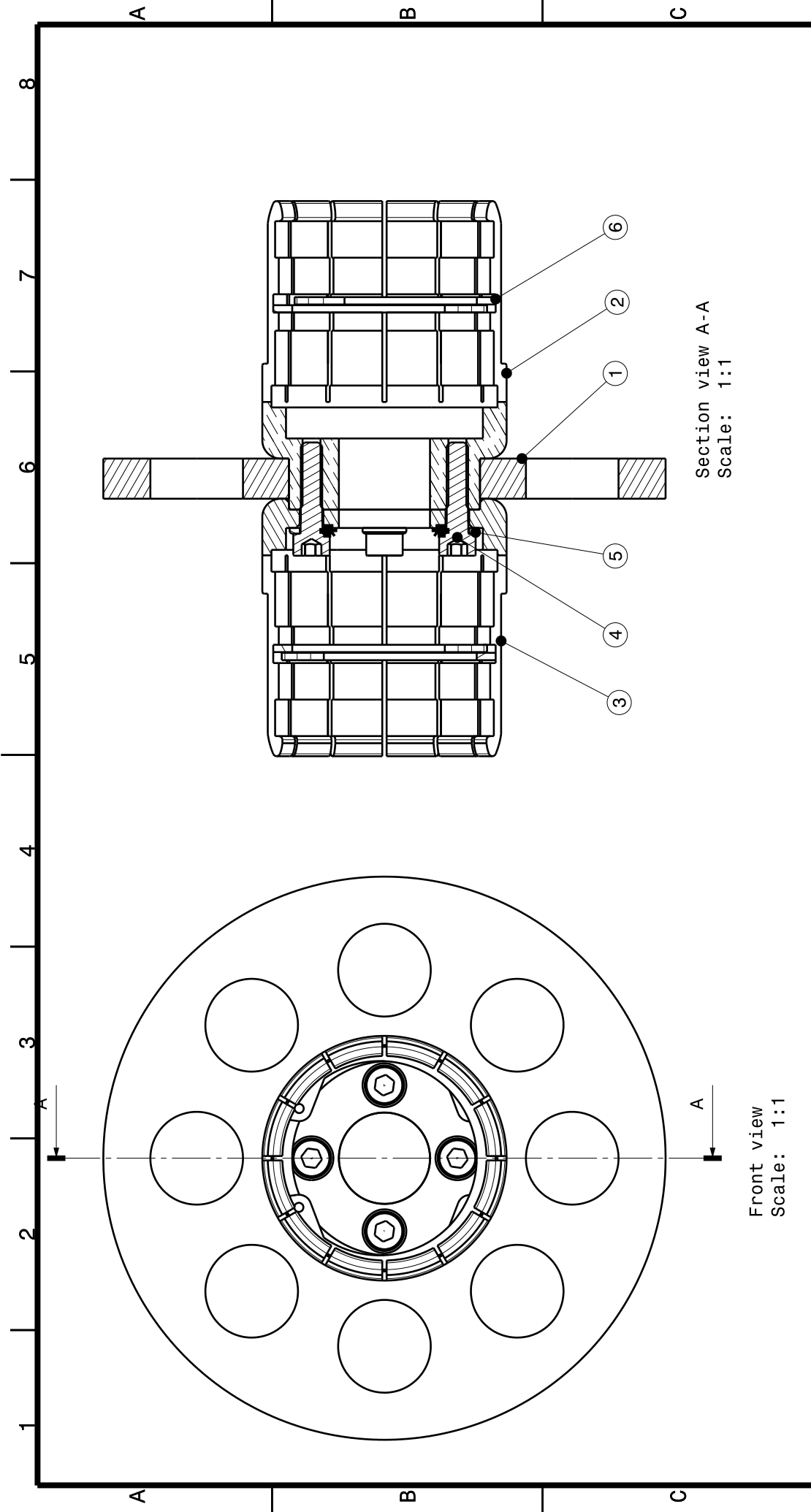
PART: O-RING MATERIAL : RUBBER SILICON



AS PER ISO 3601-1 METRIC STANDARD O-RING CROSS SECTION: 5.33MM
AND INSIDE DIAMETER: 158.12MM

INDUS ID: UQ15MTQ		RELEASED BY	ITER INDIA (IPR) GANDHINAGAR	
		APPROVED BY	CONFIDENTIAL UNLESS AUTHORISED	
		AMHIL JHA	The information on this drawing is confidential under the terms of the ITER India agreement. This information shall not be transmitted to anyone who is not authorised to receive it.	
		CHECKED BY	ROHIT ANAND	
		CONTROLLED BY		
		DRAWN BY	PARESH VASAVA	
		PBS 3 LEVELS		
		QUALITY CLASS: 02		
		SCALE		
		SHEET CLASS: A		
		NO. OF SHTS		
		THIRD ANGLE PROJECTION		

ITER-India		DRAWING TITLE	
		INNER CONDUCTOR & O-RING	
		6-1/8" BEND_ASSEMBLY	
		DRAWING NUMBER	
		11/ICH&CD/6-1/8"BEND/3&4	
		SHEET REVISION	
		04 V1_1	

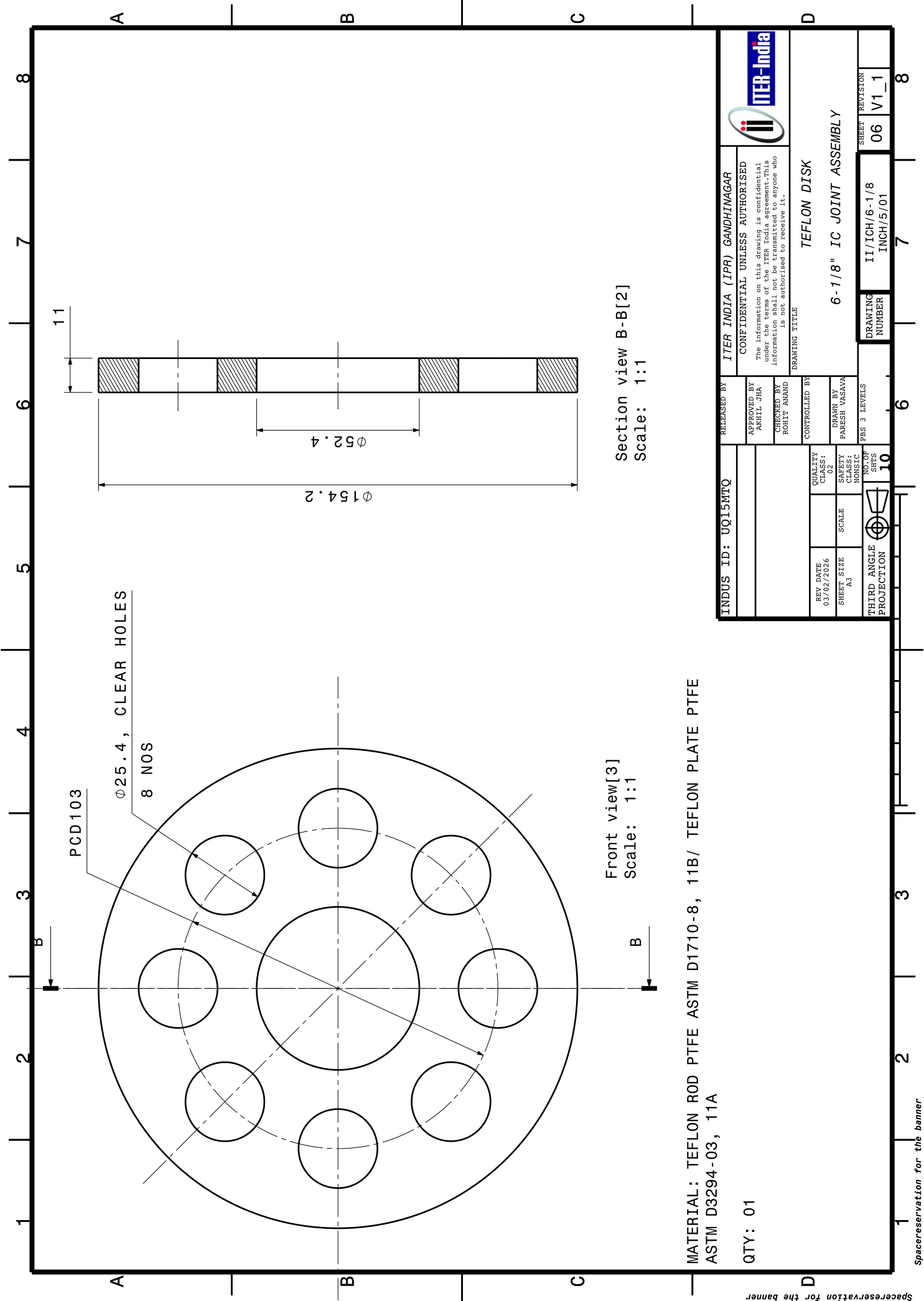


Section view A-A
Scale: 1:1

Front view
Scale: 1:1

6	CIRCLIP	SS304	4
5	SPRING WASHER FOR M6	SS304	4
4	ALLEN CAP SCREW M6x25L	SS 304	4
3	IC JOINT FEMALE	IS/ISO CuZn40	1
2	IC JOINT MALE	IS/ISO CuZn40	1
1	TEFLON DISK	TEFLON	1
PART NO	PART NAME	DESCRIPTION / MATERIAL	QTY

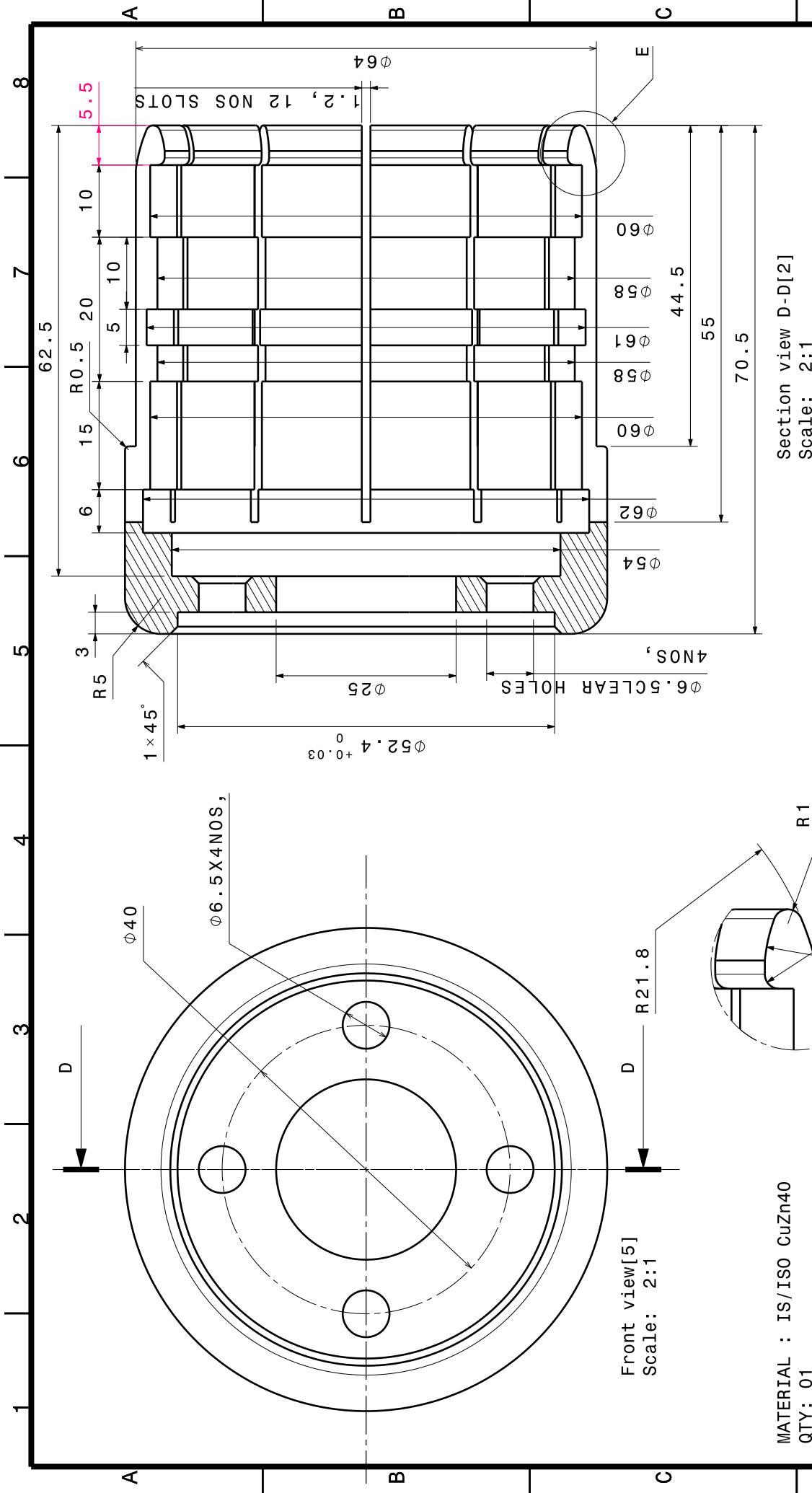
INDUS ID: UQ15MTQ		RELEASED BY ITER INDIA (IPR) GANDHINAGAR			
		APPROVED BY AKHIL JHA		CONFIDENTIAL UNLESS AUTHORISED The information on this drawing is confidential under the terms of the ITER India agreement. This information shall not be transmitted to anyone who is not authorised to receive it.	
		CHECKED BY ROHIT ANAND		DRAWING TITLE 6-1/8" IC JOINT ASSEMBLY	
REV DATE 03/02/2026		QUALITY CLASS: Q1		SHEET REVISION 05 V1_1	
SHEET SIZE A1		SCALE		DRAWING NUMBER II/ICH/6-1/8	
THIRD ANGLE PROJECTION		NO. OF SHTS 10		INCH/5/00	
		PDS 3 LEVELS			
		DRAWN BY PARESH VASAVA			
		CONTROLLED BY			



MATERIAL: TEFLON ROD PTFE ASTM D1710-8, 11B/ TEFLON PLATE PTFE
ASTM D3294-03, 11A

QTY: 01

INDUS ID: UQ15MTQ		RELEASED BY ITER INDIA (IPR) GANDHINAGAR		ITER-India	
APPROVED BY AKHIL JHA		CONFIDENTIAL UNLESS AUTHORISED The information on this drawing is confidential under the terms of the ITER India agreement. This information shall not be transmitted to anyone who is not authorised to receive it.			
CHECKED BY ROHIT ANAND		DRAWING TITLE TEFLON DISK			
CONTROLLED BY		6-1/8" IC JOINT ASSEMBLY			
REV DATE 03/02/2026		DRAWN BY PARESH VASAVA			
SHEET SIZE A1		PBS 3 LEVELS			
THIRD ANGLE PROJECTION		DRAWING NUMBER II/ICH/6-1/8 INCH/5/01			
NO OF SHEETS 10		SHEET REVISION 06 V1_1			

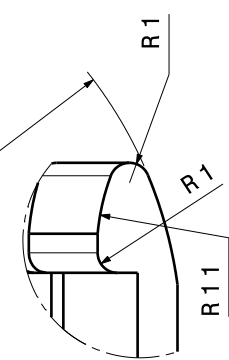


MATERIAL : IS/ISO CuZn40
QTY: 01



NOTE: FULL BODY SILVER PLATING
(Cu:5μ + Ag:20μ)

- NOTE:
- 1. ALL THREADS INSERT TO BE USED
 - 2. ALL SHARP EDGES TO BE REMOVED AND REPLACED BY CHAMFER OF 1x45 DEG
 - 3. FLATNESS VALUES ARE NOT TO EXCEED 3 MM/METER ON ANY UNSPECIFIED SURFACE
 - 4. ROUGHNESS OF ALL UNSPECIFIED SURFACES DO NOT EXCEED Ra 8μm
 - 5. ALL UNSPECIFIED TOLERANCE TO BE CONSIDERED AS PER ISO 2768-1:1989

Detail E[2]
Scale: 4:1



Section view D-D[2]
Scale: 2:1

R 11		R 1	
NOTE: FULL BODY SILVER PLATING (Cu:5μ + Ag:20μ)			
Detail E[2] Scale: 4:1			
NOTE: 1. ALL THREADS INSERT TO BE USED 2. ALL SHARP EDGES TO BE REMOVED AND REPLACED BY CHAMFER OF 1x45 DEG 3. FLATNESS VALUES ARE NOT TO EXCEED 3 MM/METER ON ANY UNSPECIFIED SURFACE 4. ROUGHNESS OF ALL UNSPECIFIED SURFACES DO NOT EXCEED Ra 8μm 5. ALL UNSPECIFIED TOLERANCE TO BE CONSIDERED AS PER ISO 2768-1:1989			
INDUS ID: UQ15MTQ		RELEASED BY ITER INDIA (IPR) GANDHINAGAR	
		CONFIDENTIAL UNLESS AUTHORISED	
		The information on this drawing is confidential under the terms of the ITER India agreement. This information shall not be transmitted to anyone who is not authorised to receive it.	
		DRAWING TITLE IC JOINT FEMALE	
REV DATE 03/02/2026		APPROVED BY AKHIL JHA	
SHEET SIZE A1		CHECKED BY ROHIT ANAND	
SCALE		CONTROLLED BY	
THIRD ANGLE PROJECTION		DRAWN BY PARESH VASAVA	
NO. OF SHTS 10		PBS 3 LEVELS	
		DRAWING NUMBER II/ICH/6-1/8 INCH/5/03	
		SHEET REVISION 08 V1_1	
			

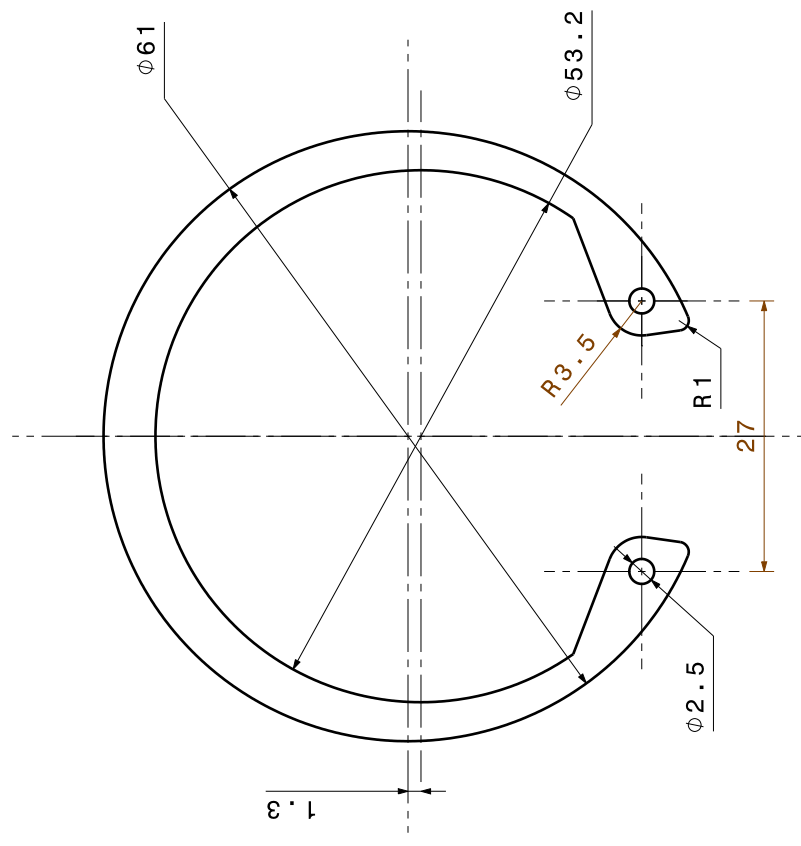
1 2 3 4 5 6 7 8

A A

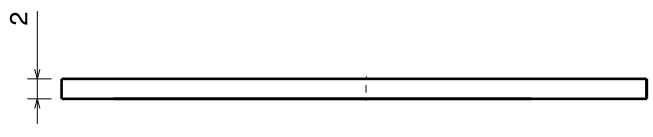
B B

C C

D D



Front view
Scale: 2:1



Left view
Scale: 2:1

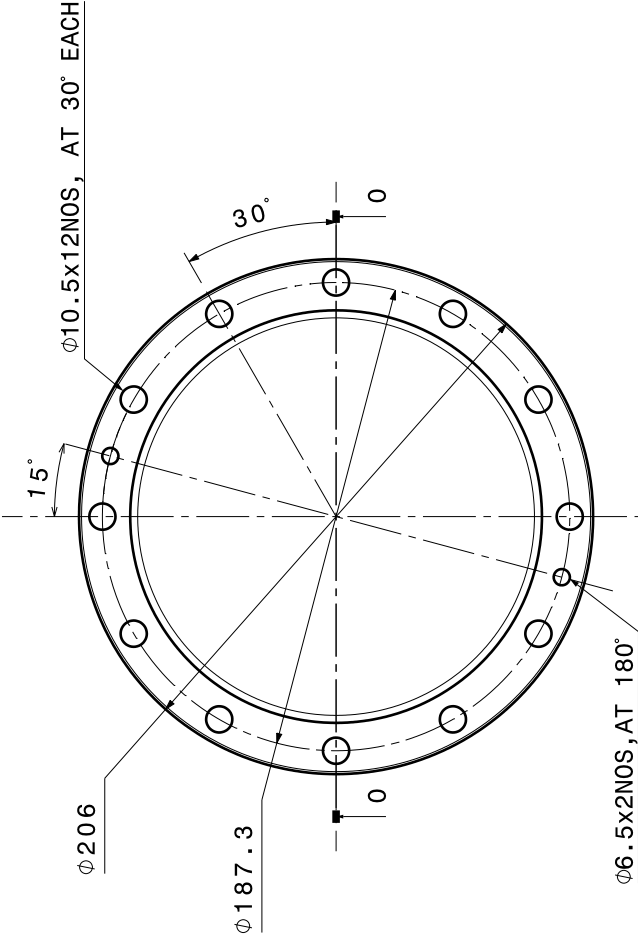
PART: CIRCLIP STANDARD ITEM
MATERIAL: SS 304

QTY: 04NOS,

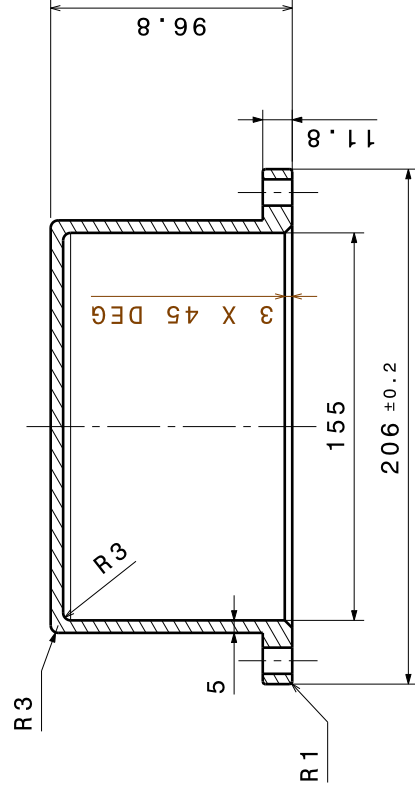
INDUS ID: UQ15MTQ		RELEASED BY ITER INDIA (IPR) GANDHINAGAR		ITER-India	
		APPROVED BY AKHIL JHA		CONFIDENTIAL UNLESS AUTHORISED The information on this drawing is confidential under the terms of the ITER India agreement. This information shall not be transmitted to anyone who is not authorised to receive it.	
		CHECKED BY ROHIT ANAND		DRAWING TITLE CIRCLIP	
REV DATE 03/02/2026		QUALITY CLASS: Q2		6-1/8" IC JOINT ASSEMBLY	
SHEET SIZE A1		SCALE		DRAWN BY PARESH VASAVA	
THIRD ANGLE PROJECTION		NO. OF SHTS 10		PBS 3 LEVELS	
				DRAWING NUMBER II/ICH/6-1/8	
				SHEET REVISION 09 V1_1	

1 2 3 4 5 6 7 8

PART: FLANGE COVER MATERIAL: PVC QTY:01

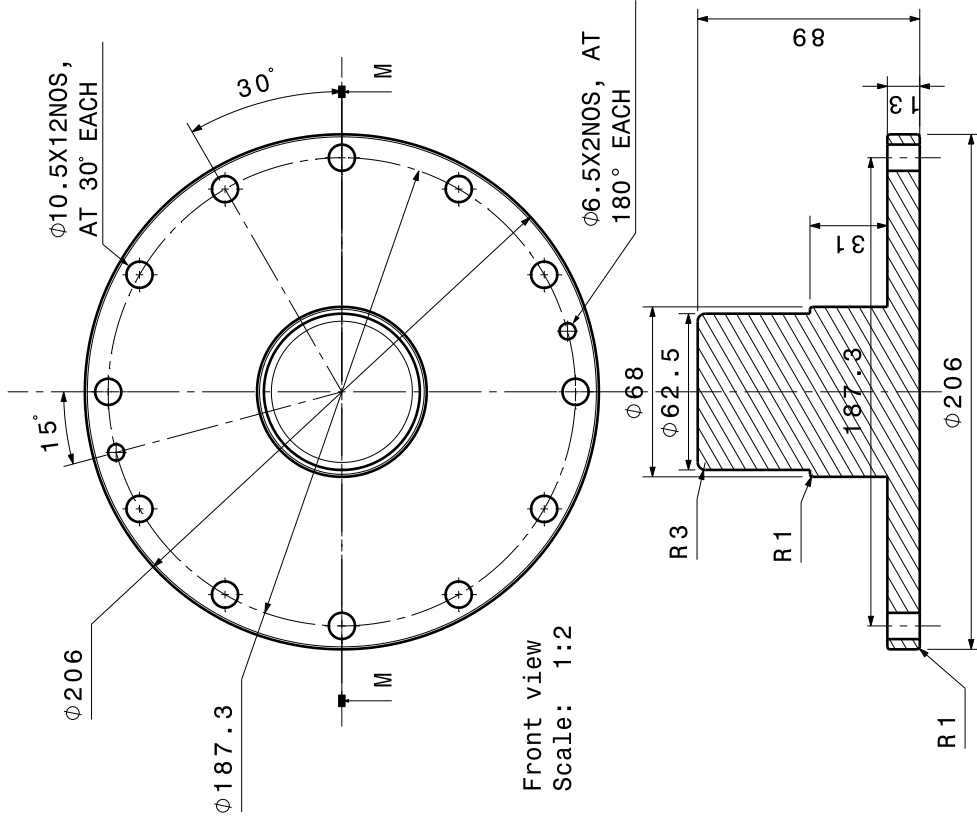


Front view
Scale: 1:2



Section view 0-0
Scale: 1:2

PART: FLANGE COVER MATERIAL: PVC QTY:01



Section view M-M
Scale: 1:2

INDUS ID: UQ15MTQ		RELEASED BY ITER INDIA (IPR) GANDHINAGAR		Scale: 1:2	
APPROVED BY AKHIL JHA		CONFIDENTIAL UNLESS AUTHORISED			
CHECKED BY ROHIT ANAND		The information on this drawing is confidential under the terms of the ITER India agreement. This information shall not be transmitted to anyone who is not authorised to receive it.			
CONTROLLED BY		DRAWING TITLE		FLANGE COVER	
REV DATE 03/02/2026		QUALITY CLASS: CLASS: 02		6-1/8" BEND_ASSEMBLY	
SHEET SIZE A3		SCALE		11/ICH&CD/6-1/8" BEND/6	
THIRD ANGLE PROJECTION		NO. OF SHEETS 10		DRAWING NUMBER 10	
				SHEET REVISION V1_1	